

# EnergyConnect

## Out Of Hours Construction Notification

September 2024

**Elecnor Australia (formerly SecureEnergy) has been contracted by Transgrid to deliver part of EnergyConnect with the construction of 700km of new power lines from the SA border to the regional energy hub of Wagga Wagga. The project will connect the electrical grids of New South Wales, South Australia, and Victoria, improving reliability of our nation’s energy supply.**

### Construction Activities

Works are progressing on the Eastern section of EnergyConnect at multiple sites along the alignment between Dinawan, near Bundure, and Wagga Wagga.

The approved hours of construction works are:

- 7am to 6pm Monday to Friday
- 8am to 1pm Saturdays
- At no time on Sundays and NSW Public Holidays.

### Work outside approved construction hours

Works outside approved construction hours are planned for the period September 2024 to January 2025, to ensure works are carried out safely and to minimise disruption to the community.

Works will take place, weather permitting:

- **Monday to Sunday 7am to 7pm (including Public Holidays)**

The scope of construction work is summarised in the table below:

Location and Activity	Description	Work dates*
Access tracks between Dinawan (Bundure) and Wagga Wagga.	<ul style="list-style-type: none"> <li>• Clearing and grubbing</li> <li>• Minor earthworks</li> <li>• Drainage installation</li> </ul>	September 2024 to January 2025
Assembly and erection of transmission towers within easements between Dinawan (Bundure) and Wagga Wagga.	<p>Overhead transmission lines construction activities along the easement include:</p> <ul style="list-style-type: none"> <li>• Clearing and grubbing</li> <li>• Minor earthworks</li> <li>• Foundation drilling for towers</li> <li>• Foundation concrete pours</li> <li>• Tower assembly</li> <li>• Tower erection</li> <li>• Stringing activities</li> </ul>	September 2024 to January 2025
Construction activities between Dinawan Substation (Bundure, near Coleambally).	<ul style="list-style-type: none"> <li>• Clearing and grubbing</li> <li>• Topsoil stripping</li> <li>• Bulk earthworks</li> <li>• Internal road construction</li> <li>• Substation construction</li> </ul>	September 2024 to January 2025
Construction activities at the Wagga Wagga Substation	<ul style="list-style-type: none"> <li>• Clearing and grubbing</li> <li>• Topsoil stripping</li> <li>• Bulk earthworks and drainage</li> <li>• Drilling foundations</li> <li>• Replacement and upgrade of high voltage equipment.</li> <li>• Substation expansion</li> </ul>	September 2024 to January 2025

## How could this impact you?

You can expect to see the assembly and erection of towers as construction activities progress between Wagga Wagga and Dinawan. There will be an increased number of construction vehicles on the roads across the project area during the work. All work will be carried out in line with the project's Conditions of Approval and Construction Environmental Plan

## How we're managing impacts

### Traffic Impacts

There may be an increase in road noise levels due to construction traffic, but this will only occur during daytime and any noise impacts are temporary. Dust impacts on sealed roads due to construction vehicle movements will be minimal

Please use care sharing roads with construction vehicles as they have high axle loads and greater turning circles.

Temporary traffic changes may be in place to ensure the work zone is safe. Please keep to the sign posted speed limits, follow the direction of traffic controllers and drive to the conditions.

## Site light, noise and vibration

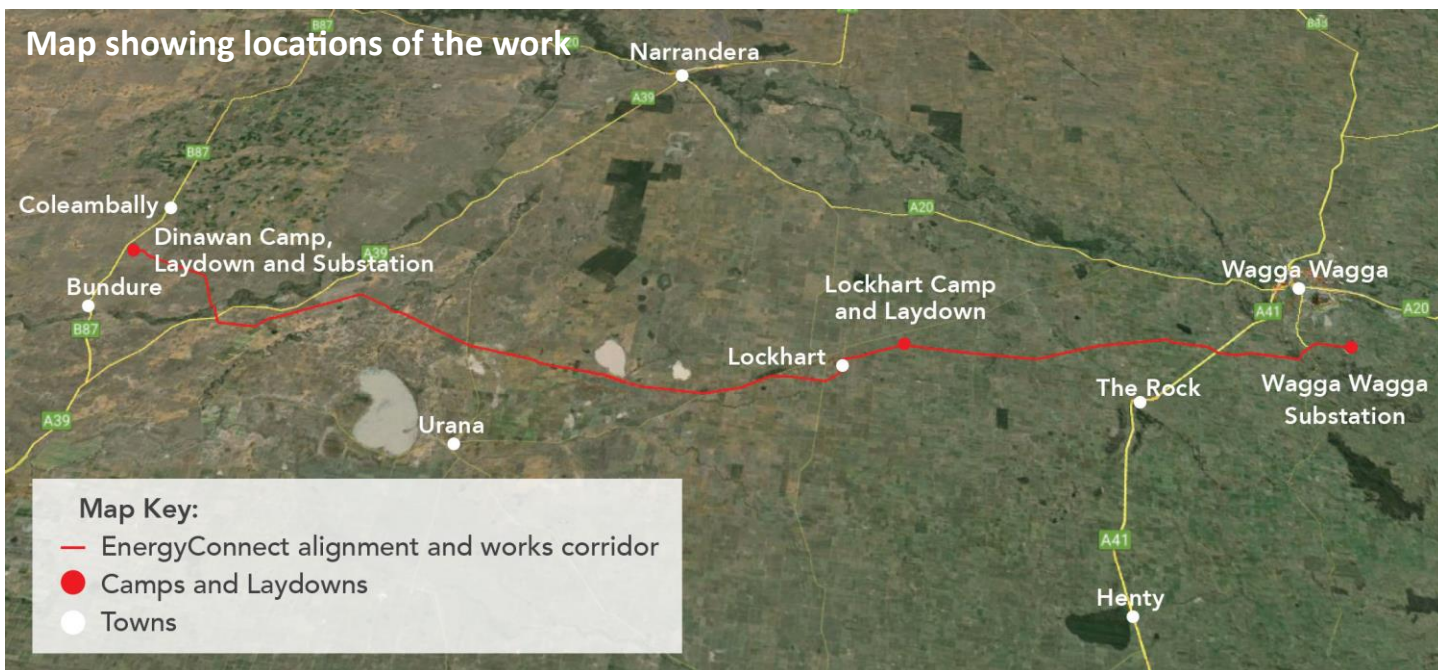
The type of plant and equipment you can expect to see at various stages of construction are mobile cranes, crane trucks, semi-trailers, bobcats, trucks and additional light vehicles.

Machinery and equipment will generate some light, noise and vibration. We will make every effort to minimise impacts by:

- Minimising the number of machines/vehicles to be used.
- Ensuring all machinery and vehicles are maintained and serviced.
- Turning off machinery and vehicles when not in use.
- Directing any temporary lighting down and away from homes.
- Fitting equipment with devices to minimise noise.
- Monitoring noise so we can manage any potential impacts and change our work as required.

## Ongoing landholder notifications

As work continues in the construction corridor, there will be an increase in workers accessing the construction sites. As identified in landholders' Property Management Plans, once these construction activities commence, we will not be notifying landholders every time we access their properties. However, the project team remains committed to engaging with landholders, offering regular updates on construction progress. All construction activities will be carried out in accordance with the Property Management Plans, Property Advice Statements, and the Biosecurity Management Plans.



## More information

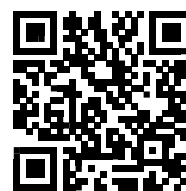
For further information about the project visit [www.secureenergyjv.com.au](http://www.secureenergyjv.com.au) or access our Fact Sheets using the QR codes:



Fact Sheet  
Substations



Fact Sheet  
Transmission Lines



Fact Sheet  
Danubio tower

## Keep Updated on EnergyConnect

Elecnor Australia is committed to working with landowners and communities through the construction of EnergyConnect.

There are several ways to contact the project team. Contact the Project Community and Stakeholder Engagement Team on:

1800 49 06 66 (free call) [pec.community@elecnor.es](mailto:pec.community@elecnor.es)  
[www.secureenergyjv.com.au/projects/energyconnect](http://www.secureenergyjv.com.au/projects/energyconnect)

Subscribe to our project e-newsletter at  
[www.transgrid.com.au/energyconnect](http://www.transgrid.com.au/energyconnect)