

# EnergyConnect

## Construction Notification

October 2024

**Elecnor Australia (formerly SecureEnergy) has been contracted by Transgrid to deliver part of EnergyConnect with the construction of 700km of new power lines from the SA border to the regional energy hub of Wagga Wagga. The project will connect the electrical grids of New South Wales, South Australia, and Victoria, improving reliability of our nation’s energy supply.**

### Construction Activities

Elecnor Australia are constructing a new laydown site approximately 15km south of Balranald on the Yanga Way following development approval from Balranald Shire Council.

The site is known as the Limondale Laydown and it will be used to house our large equipment such as graders and mobile cranes along with steel bundles and conductor wire for the transmission line between Balranald and a new substation at Dinawan, near Coleambally.

### Scope of works

Construction of the laydown is occurring Monday to Sunday 6am to 7pm during October.

Once operational, the laydown will operate up to 24-hours a day in accordance line with Environmental Impact Statement conditions.

The scope of construction work is summarised in the table below:

Location and Activity	Description	Work dates*
Construction works for the Limondale Laydown which is located on the Yanga Way.	<ul style="list-style-type: none"> <li>Slashing</li> <li>Clearing and grubbing</li> <li>Earthworks</li> <li>Drainage installation</li> <li>Fencing</li> </ul>	October 2024
Impacted traffic construction routes and water access routes	<p>State roads:</p> <ul style="list-style-type: none"> <li>Sturt Highway</li> <li>Yanga Way (The Mallee Highway has been renamed the Yanga Way.)</li> </ul> <p>Regional roads:</p> <ul style="list-style-type: none"> <li>Balranald Road</li> </ul> <p>Local roads:</p> <ul style="list-style-type: none"> <li>Windomal Road</li> <li>Waugorah Road</li> </ul>	October 2024
Operation of the Limondale Laydown	<ul style="list-style-type: none"> <li>Deliveries</li> <li>Offices</li> <li>Workshop</li> <li>Storage Sheds</li> </ul>	October 2024 to October 2025

## How could this impact you?

There will be an increased number of construction vehicles and trucks on the road during construction. Once the earthmoving equipment has been mobilised to site, the main traffic entering and exiting the Yanga Way will be trucks hauling the hardstand fill material to site and a water truck circulating to site from a water fill point in Balranald. All work will be carried out in line with the project's Conditions of Approval and Construction Environmental Plan.

## How we're managing impacts

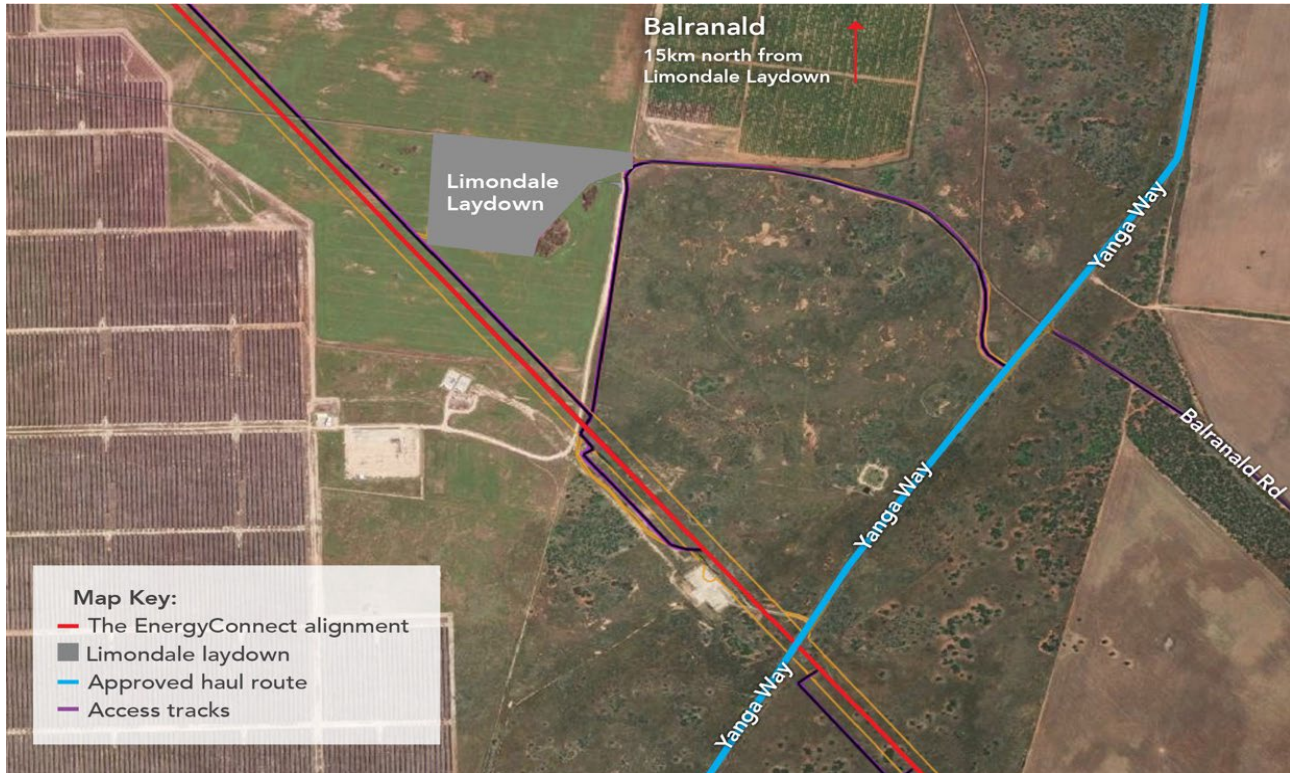
### Site light, noise and vibration

The type of plant and equipment you can expect to see at various stages of construction are semi-trailers, bobcats, trucks and additional light vehicles.

Machinery and equipment will generate some light, noise and vibration. We will make every effort to minimise impacts by:

- Minimising the number of machines/vehicles to be used.
- Ensuring all machinery and vehicles are maintained and serviced.
- Turning off machinery and vehicles when not in use.
- Directing any temporary lighting down and away from homes.
- Fitting equipment with devices to minimise noise.
- Monitoring noise so we can manage any potential impacts and change our work as required.

## Map showing location of the work



### Traffic impacts

Temporary traffic changes may be in place to ensure the work zone is safe. Please keep to the sign posted speed limits, follow the direction of traffic controllers, and drive to the conditions.

### Operation of the Laydown

The project will use the laydown yard as a construction compound from October 2024 for the duration of construction, anticipated to be complete by October 2025.

The laydown will operate up to 24-hours a day in accordance line with Environmental Impact Statement conditions.

In addition to the laydown area for construction materials, plant and equipment, there will be temporary offices, workshops and storage sheds to support project operations.

### Truck movements

It is anticipated there could be more than 30 truck movements a day to and from the site.

### Lighting

24-hour lighting is required for safety reasons and the design of the laydown will minimise any off-site lighting impacts through lighting design and lighting direction.

## Keep Updated on EnergyConnect

Elecnor Australia is committed to working with landowners and communities through the construction of EnergyConnect. There are several ways to contact the project team. Contact the Project Community and Stakeholder Engagement Team on:

1800 49 06 66 (free call) [pec.community@elecnor.es](mailto:pec.community@elecnor.es)  
[secureenergyjv.com.au/projects/energyconnect](https://secureenergyjv.com.au/projects/energyconnect)

Subscribe to our project e-newsletter at  
[www.transgrid.com.au/energyconnect](http://www.transgrid.com.au/energyconnect)

To provide any feedback on the way we engage visit  
[www.secureenergyjv.com.au/tell-us-what-you-think/](http://www.secureenergyjv.com.au/tell-us-what-you-think/)

