

EnergyConnect

Out of Hours Construction Notification

November 2024

Elecnor Australia (formerly SecureEnergy) has been contracted by Transgrid to deliver part of EnergyConnect with the construction of 700km of new power lines from the SA border to the regional energy hub of Wagga Wagga. The project will connect the electrical grids of New South Wales, South Australia, and Victoria, improving reliability of our nation's energy supply.

Work outside of approved construction hours

Works are progressing at the Wagga Wagga Substation on Ashfords Road, Gregadoo.

The approved hours of construction work at the Substation are: 7am to 7pm Monday to Sunday including public holidays.

Works outside approved construction hours are planned for the period **Monday 4 November 2024 to Wednesday 6 November 2024**, to ensure works are carried out safely and to minimise disruption to the community.

Night works will take place, weather permitting: Monday 9pm to Tuesday 7am & Tuesday 9pm to Wednesday 7am.

The scope of construction work is summarised in the table below:

Location and Activity	Description	Work dates*
Construction activities at the Wagga Wagga Substation located between Ashfords Road and Boiling Down Road.	<ul style="list-style-type: none">• Installation of Earthgrid• Installation of high voltage equipment• Stringing of High Voltage Conductors	4-6 November 2024

How could this impact you?

There will be at least four portable lighting towers that will be used at night for the safety of workers.

There will also be an increased number of construction vehicles during the work.

All work will be carried out in line with the project's Conditions of Approval and Construction Environmental Plan.

How we're managing impacts

Site light, noise and vibration

Machinery and equipment will generate some light, noise and vibration. We will make every effort to minimise impacts by:

- Minimising the number of machines/vehicles to be used.
- Ensuring all machinery and vehicles are maintained and serviced.
- Turning off machinery and vehicles when not in use.
- Directing any temporary lighting down and away from homes.
- Fitting equipment with devices to minimise noise.
- Monitoring noise so we can manage any potential impacts and change our work as required.

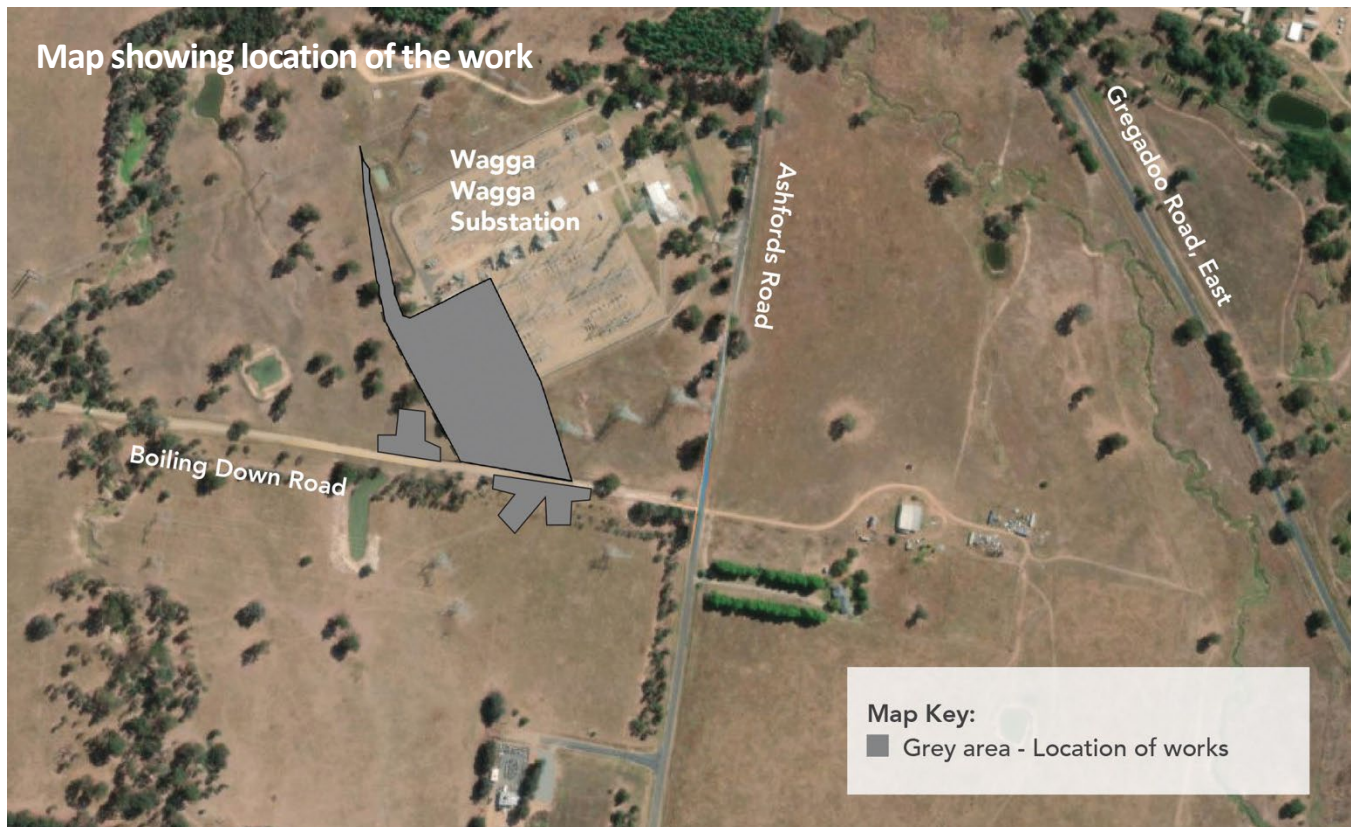
Traffic Impacts

Please use care sharing roads with construction vehicles as they have high axle loads and greater turning circles.

Our work is likely to generate some dust. To reduce the impact for nearby residents we'll be providing continuous dust suppression, where practical.

Types of equipment

The type of plant and equipment you can expect to see during these works includes two Elevated Work Platforms, one 90-tonne slew/mobile crane, two light towers, three battery powered hand tools, four pneumatic rattle guns, battery powered hand tools and one welding equipment.



Keep Updated on EnergyConnect

Electron Australia is committed to working with landowners and communities through the construction of EnergyConnect.

There are several ways to contact the project team. Contact the Project Community and Stakeholder Engagement Team on:

1800 49 06 66 (free call) pec.community@electron.es [secureenergyjv.com.au/projects/energyconnect](https://www.secureenergyjv.com.au/projects/energyconnect)

Write to us at Electron Australia 1/22 Edward Street, Wagga Wagga NSW 2650

To provide any feedback on the way we engage visit www.secureenergyjv.com.au/tell-us-what-you-think/

Subscribe to our project e-newsletter at www.transgrid.com.au/energyconnect