

EnergyConnect

Out Of Hours Construction Notification

December 2024

Elecnor Australia (formerly SecureEnergy) has been contracted by Transgrid to deliver part of EnergyConnect with the construction of 700km of new power lines from the SA border to the regional energy hub of Wagga Wagga. The project will connect the electrical grids of New South Wales, South Australia, and Victoria, improving reliability of our nation's energy supply.

Construction Activities

The EnergyConnect project team are continuing to advance construction activities on the Eastern section of the alignment across three Local Government Areas (LGAs) including Murrumbidgee, Hay Shire and Edward River.

The approved hours of construction works are:

- 7am to 6pm Monday to Friday
- 8am to 1pm Saturdays
- At no time on Sundays and NSW Public Holidays.

Work outside approved construction hours

Works outside approved construction hours are planned from December 2024 to November 2025, to ensure works are carried out safely and to minimise disruption to the community.

- **Clearing and grubbing, access point and track construction will occur Monday to Sunday 6am to 7pm (including Public Holidays), weather permitting.**
- **Foundation works and concrete pours will occur Monday to Sunday 4.30am to 10pm (Including Public Holidays), weather permitting.**

Overhead transmission line construction activities

The scope of overhead transmission line construction activities across the three local government areas includes:

- Clearing and grubbing
- Access points
- Access tracks
- Minor earthworks
- Tower footprints
- Foundation drilling for towers
- Foundation concrete pours

How could this impact you?

Generally, these activities have been identified as having an inaudible noise risk due to the distance of sensitive receivers from the proposed work locations. However, where there are identified sensitive receivers including landholders from the proposed works, standard hours of work will apply.

All work will be carried out in line with the project's Conditions of Approval and Construction Environmental Plan.

How we're managing impacts

Site light, noise and vibration

Machinery and equipment will generate some light, noise and vibration. We will make every effort to minimise impacts by:

- Minimising the number of machines/vehicles to be used.
- Ensuring all machinery and vehicles are maintained and serviced.
- Turning off machinery and vehicles when not in use.
- Directing any temporary lighting down and away from homes.
- Fitting equipment with devices to minimise noise.
- Monitoring noise so we can manage any potential impacts and change our work as required.

Traffic impacts

Temporary traffic changes may be in place to ensure the work zone is safe. Please keep to the sign posted speed limits, follow the direction of traffic controllers, and drive to the conditions such as slowing down in wet weather and poor visibility.

Identified* traffic construction and water access routes across the three local government areas include:

State roads: Sturt Highway, Cobb Highway

Regional roads: Maude Road, Pretty Pine Road (east), Wanderer Street, Conargo Road, Morundah Road, Yamma Road, Jerilderie-Urana Road.

Local roads Hay Shire LGA: West Burrabogie Road, Romani Road (only the sealed section), Jerilderie Road, Glenhope Road, Thelangerin Road, Lachlan Street, Cadell Street, Dunera Way.

Local roads Edward River LGA: Booroorban-Tchelery Road, Carrathool Road, Dry Lake Road, Goolgumbra Road, Pooginook Road, East-West Road, Millears Road, Monimail Road, Moonbria Road, Nesbits Road, Wandook Road, Warwillah Road, Willurah Road.

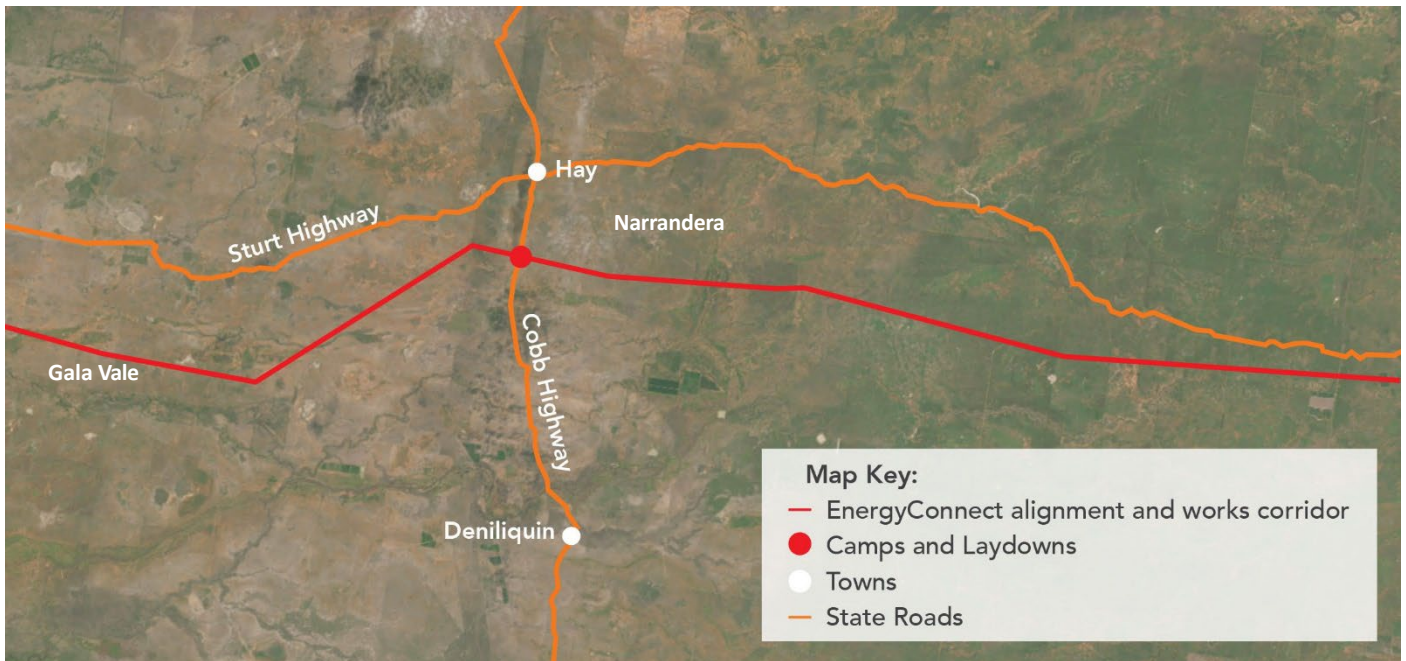
Local roads Murrumbidgee LGA: Bundure Road, Cadell Road, Colombo Road, Crutchs Road, Wilsons Road (north), Goolgumbra Road, Jimmy Cull Road, Fernbank Road, Four Corners Road, Liddles lane, McDonald Road, McLennons Bore Road, North Boundary Road, Six Mile Lane, Thurra Road Wilson Road, Crosby Road, Gilbert Road.

*The list is not exhaustive

Types of equipment

The type of plant and equipment you can expect to see at various stages of general construction are concrete pumps, diesel generators, piling rig with impact hammer, pressure washers, welding equipment, water carts, agitators, graders, rollers, mulchers, excavators, semi-trailers, telehandlers, bobcats, concrete trucks, rollers, tractors, heavy-lift cranes, mobile cranes and additional light vehicles.

Map showing location of the works



Keep Updated on EnergyConnect

Elecnor Australia is committed to working with landowners and communities through the construction of EnergyConnect. There are several ways to contact the project team. Contact the Project Community and Stakeholder Engagement Team on:

1800 49 06 66 (free call) pec.community@elecnor.es secureenergyjv.com.au/projects/energyconnect
Please write to us at: Elecnor Australia 1/22 Edward Street, Wagga Wagga NSW 2650
Subscribe to our project e-newsletter at www.transgrid.com.au/energyconnect

To provide any feedback on the way we engage visit www.secureenergyjv.com.au/tell-us-what-you-think/

