

**Elecnor Australia (formerly SecureEnergy) has been contracted by Transgrid to deliver part of EnergyConnect with the construction of 700km of new power lines from the SA border to the regional energy hub of Wagga Wagga. The project will connect the electrical grids of New South Wales, South Australia, and Victoria, improving reliability of our nation's energy supply.**

### About the work

The EnergyConnect project team are continuing to advance construction activities on the Eastern section of the alignment between Buronga, NSW and Dinawan, near Bundure.

As part of this work, we will be stringing transmission lines across the Murrumbidgee River downstream of Balranald during the month of **April 2025**, weather permitting. If you are intending to use the Murrumbidgee River, please check the [Maritime NSW](#) current marine notices before heading out.

### Transmission line construction activities

The scope of stringing activities across the Murrumbidgee River includes the following:

- Setting up of brake winch sites
- Draw wire run out
- Pulling out conductors
- Termination of conductors
- Clamping of conductors
- Installing conductor spacers

### Work outside of approved construction hours

The approved hours of construction works are:

- 7am to 6pm Monday to Friday
- 8am to 1pm Saturdays
- At no time on Sundays and NSW Public Holidays.

Works outside standard construction hours are planned until December 2025 to minimise disruption to landholders and the community. Stringing works across the Murrumbidgee River will take place, weather permitting **Monday to Sunday 7am to 7pm (including public holidays)**.

### How this could affect you?

Boating movements around the construction zone will be restricted during working hours. Boat users accessing the river at the following locations should be mindful of these restrictions.

- Balranald Boat Ramp (upstream)
- Murrumbidgee Junction Reserve (downstream)

Boat users are advised to navigate the area with care.

## How we are managing impacts

### Boating traffic

An exclusion zone will be set up across the Murrumbidgee River using approved navigational marks approximately 100m from either side of the works locations.

The location of the crossing is remote and unlikely to see any vessels transit through. Any waterway traffic will be managed using channel blocking signage and spotters.

There will be no impact to waterway traffic outside approved construction hours.

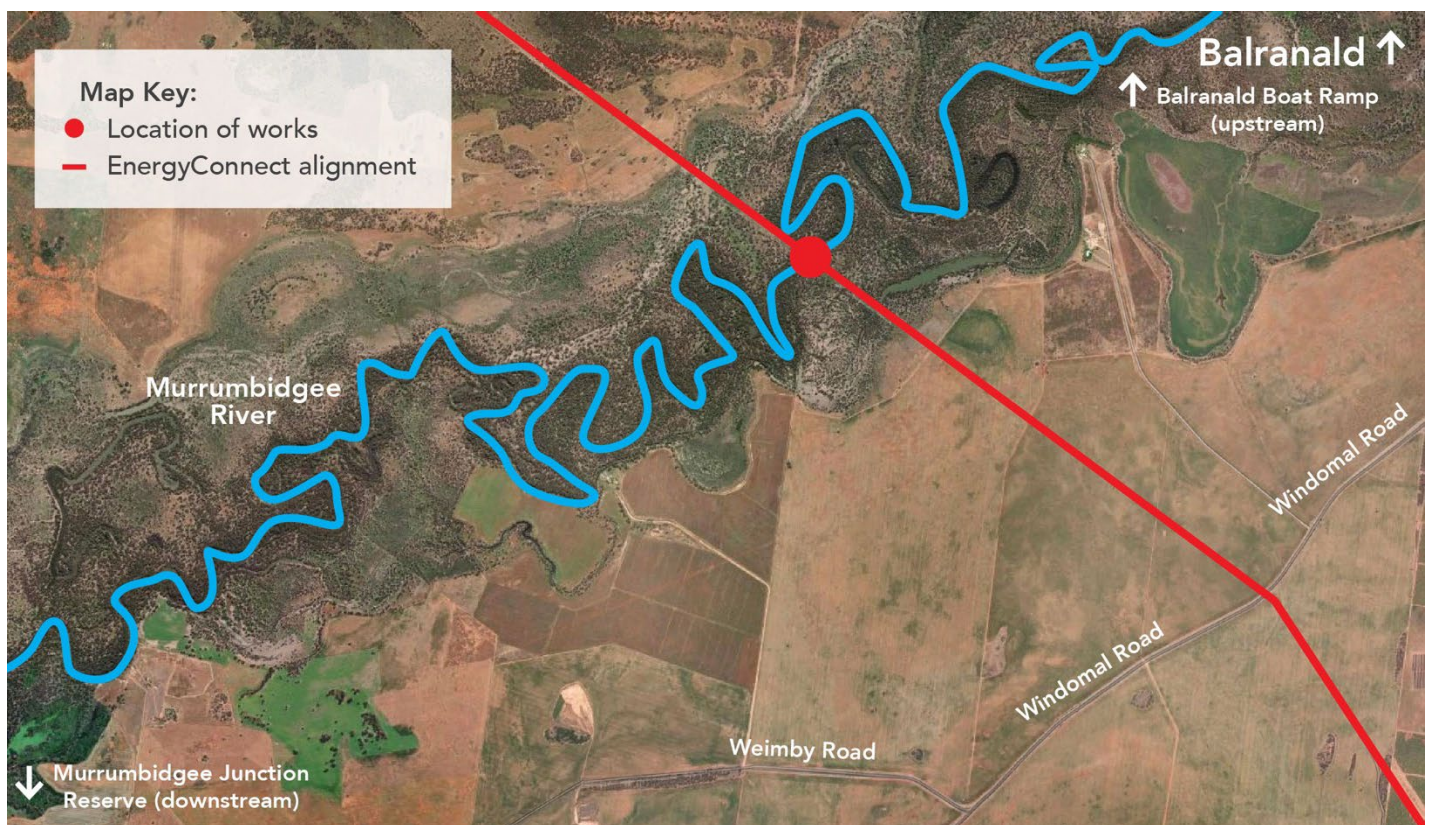
### Machinery, noise and traffic

For stringing works you will see steel cables, draw wire, conductor wire, insulators, elevated work platforms, rough terrain cranes, telehandlers, trucks and light vehicles. There will also be additional construction traffic accessing the site on nearby roads.

Machinery and equipment may generate dust, noise and vibration. These Impacts will be managed by:

- Minimising the number of machines/vehicles to be used where possible
- Ensuring all machinery and vehicles are maintained and serviced
- Turning off machinery and vehicles when not in use
- Fitting equipment with devices to minimise noise
- Using water carts, stabilising stockpiles and reducing speed on unsealed roads to suppress dust
- Monitoring dust, noise and vibration to manage any potential impacts and change our work if required.

## Map showing location of the work



## Keep Updated on EnergyConnect

Elecnor Australia is committed to working with landowners and communities through the construction of EnergyConnect.

There are several ways to contact the project team. Contact the Project Community and Stakeholder Engagement Team on:

1800 49 06 66 (free call) or [pec.community@elecnor.es](mailto:pec.community@elecnor.es)

[secureenergyjv.com.au/projects/energyconnect](https://secureenergyjv.com.au/projects/energyconnect)

Write to us at: Elecnor Australia 1/22 Edward Street, Wagga Wagga NSW 2650

Subscribe to our project e-newsletter at [www.transgrid.com.au/energyconnect](http://www.transgrid.com.au/energyconnect)

To provide any feedback on the way we engage please tell us at [www.secureenergyjv.com.au/tell-us-what-you-think/](http://www.secureenergyjv.com.au/tell-us-what-you-think/)

