

Elecnor Australia has been contracted by Transgrid to deliver part of EnergyConnect with the construction of 700km of new power lines from the SA border to the regional energy hub of Wagga Wagga. The project will connect the electrical grids of New South Wales, South Australia, and Victoria, improving reliability of our nation's energy supply.

Construction activities

The EnergyConnect project team are continuing to advance construction activities on the transmission line from Buronga, NSW to Dinawan, near Bundure. This transmission line consists of 800 towers stretching over 376km.

Transmission line stringing across roads

The project team will be stringing transmission lines across a number of roads in the Murrumbidgee Local Government Area (LGA) as part of this construction activity. This work will take place **from Sunday 18 May 2025 to Wednesday 28 May 2025**, with stringing activity occurring at:

- **Four Corners Road** (unsealed) - approximately 30km west of Coleambally, NSW.
- **Conargo Road** (sealed) - approximately 35km west of Jerilderie, NSW

Work outside of approved construction hours

The approved hours of works are:

- 7am to 6pm Monday to Friday
- 8am to 1pm Saturdays
- At no time on Sundays and NSW Public Holidays.

This activity is part of approved out of hours construction work to ensure works are carried out safely and to minimise disruption to the community. Stringing works across roadways will take place, weather permitting, Monday to Sunday 7am to 7pm including Public Holidays.

How could this affect you?

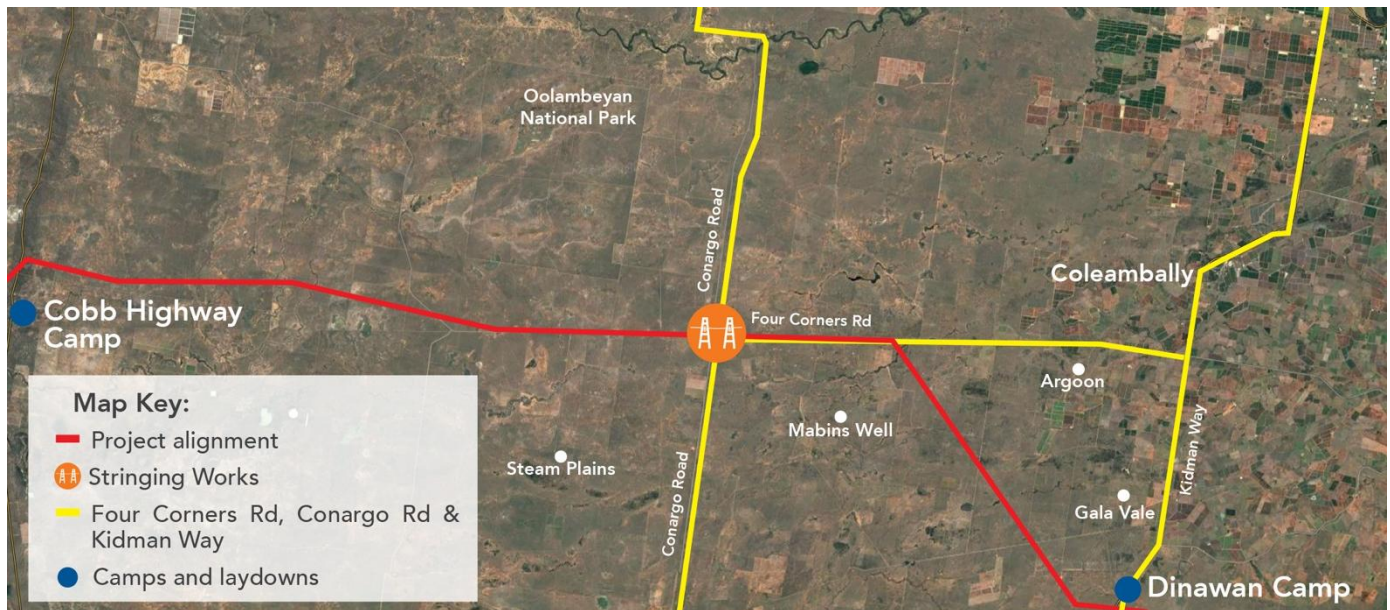
There will be an increased number of construction vehicles, plant and machinery operating in the area of the works and travelling to and from these sites. Temporary traffic changes will be in place to ensure the work zone is safe. Road users should factor this in when planning their journeys and allow for delays.

Types of equipment

The type of plant and equipment you can expect to see as part of the stringing works include steel cables, draw wire, conductor wire, insulators, elevated work platforms, rough terrain cranes, telehandlers, trucks and light vehicles.

All work will be carried out in line with the project's Conditions of Approval and Construction Environmental Plan.

Map showing the location of the works



How we're managing impacts

Traffic management

Four Corners Road: There will be traffic control to manage the stringing across the road.

Conargo Road: There will be two cranes on this road along with Traffic Management.

Please keep to the sign posted speed limits, follow the direction of traffic controllers, and drive to the conditions.

Site light, noise and vibration

Machinery and equipment will generate some light, noise and vibration. We will make every effort to minimise impacts by:

- Minimising the number of machines/vehicles to be used
- Ensuring all machinery and vehicles are maintained and serviced
- Turning off machinery and vehicles when not in use
- Fitting equipment with devices to minimise noise
- Monitoring dust, noise and vibration to manage any potential impacts and change our work if required.

Contact Us

Please contact us if you have any questions about the stringing works or if you have any questions about the project. We can be contacted via: **Project Community and Stakeholder Engagement Team** on 1800 49 06 66 (free call) or email pec.community@elecnor.es

Keep Updated on EnergyConnect

Elecnor Australia is committed to working with landowners and communities through the construction of EnergyConnect. There are several ways to contact the project team. Contact the Project Community and Stakeholder Engagement Team on:

1800 49 06 66 (free call) or pec.community@elecnor.es

secureenergyjv.com.au/projects/energyconnect

Write to us at: Elecnor Australia 1/22 Edward Street, Wagga Wagga NSW 2650

To provide any feedback on the way we engage please tell us at www.secureenergyjv.com.au/tell-us-what-you-think/

