

Elecnor Australia (formerly SecureEnergy) has been contracted by Transgrid to deliver part of EnergyConnect with the construction of 700km of new power lines from the SA border to the regional energy hub of Wagga Wagga. The project will connect the electrical grids of New South Wales, South Australia, and Victoria, improving reliability of our nation's energy supply.

Rehabilitation overview

As part of this project, the EnergyConnect team is undertaking the rehabilitation of impacted areas. This involves restoring the land to as closely as possible to its pre-construction condition, or as agreed with landholders. Below is an overview of the rehabilitation process and what you can expect.

Gates and fences

During the rehabilitation process, gates that were installed for access and are no longer required for use by landholders, or Transgrid operational purposes, will be removed, and fences reinstated. Any damage to gates and fences caused by the project, will be repaired. Gates requiring security measures will be fitted with chains and Transgrid locks. Decisions on keeping, replacing, or repairing gates will be based on landholder agreements and operational requirements.

Rehabilitation of tower pads and access tracks

Access tracks will be restored to their pre-construction condition unless a landholder agreement specifies otherwise. The project team will restore compacted areas by loosening the soil to a depth of 250mm for normal compaction and 300mm for heavily compacted areas. All restored areas will be shaped to match the natural landscape, ensuring proper water flow. Low points in the tracks will be adjusted as needed, and suitable subsoil will be used directly under the towers and on the tracks.

Drainage and access points

Restoration may include fixing drainage, with council approvals obtained where necessary. Erosion control measures will be installed where required to ensure the stability and functionality of the land.

Weed management approach

Herbicide application will be carried out via spot spraying where applicable. If invasive weeds were present before construction, discussions with the landholder will determine appropriate management actions.

Survey pegs, flagging, and tape

Flagging used to mark environmentally sensitive areas will remain in place until all construction activities are completed. A clean-up crew will conduct a full-line sweep, collecting green flagging, star pickets, tower and gate identification signs, and all remaining debris.



EnergyConnect towers (left) located on the Sturt Highway near Balranald, NSW.

Biodiversity Management Plan (BMP) compliance

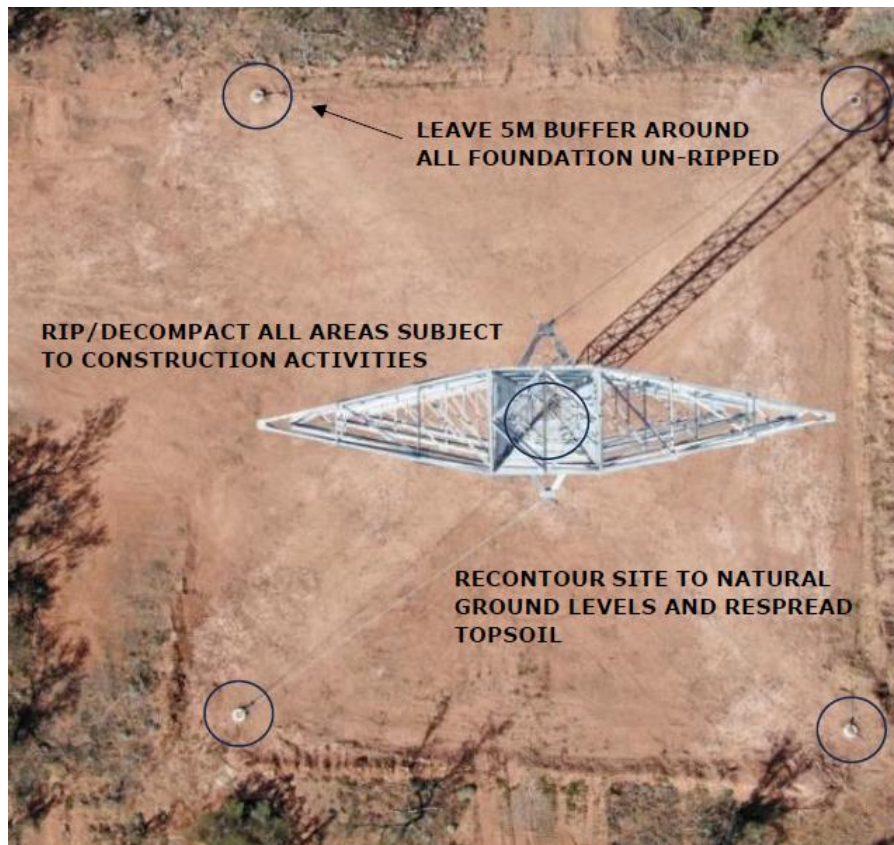
All impacted areas will be restored in line with the Biodiversity Management Plan (BMP) and landholder agreements. Natural regeneration is expected across the project area, with no requirement for seeding.

Cultural heritage management

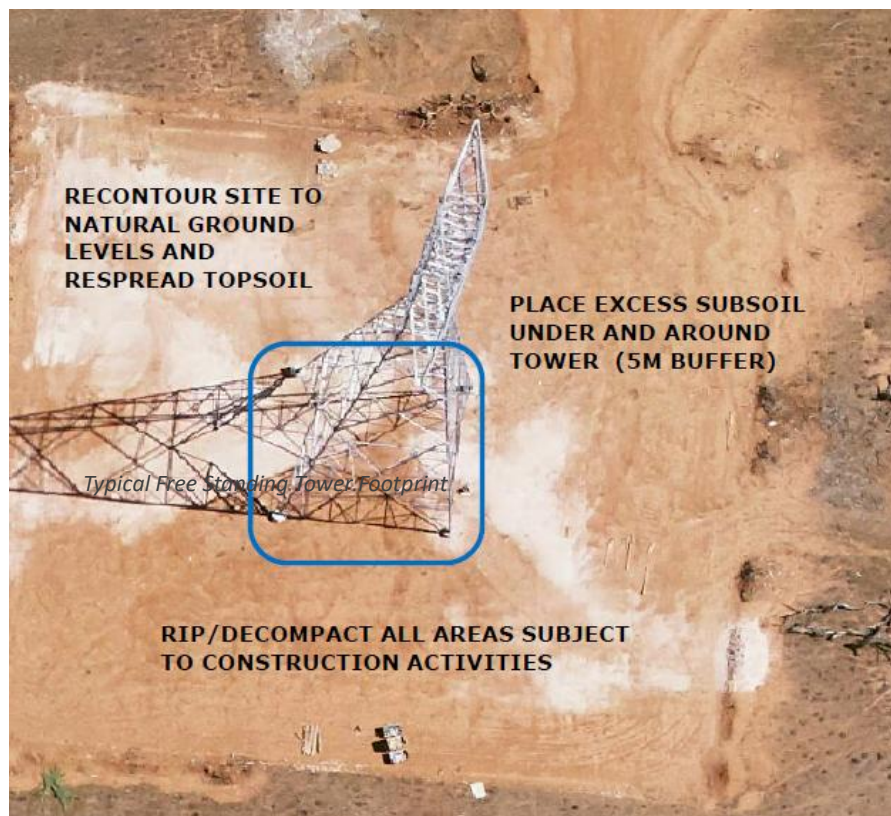
All cultural heritage areas will be protected in accordance with heritage management protocols and agreed protection measures.

Final signoffs

After all rehabilitation activities are finished, our Land Access team will consult with landholders for final signoffs to ensure that all work meets their expectations and requirements.



Typical Guyed Tower Footprint (above) and freestanding tower (below)



Tower footprint rehabilitation

These tower footprint images (at left) illustrate various tower types and the general approach to site rehabilitation. This may not be applicable to all properties.

Contact Us

Please contact a Land Access Officer in relation to property access matters and any concerns you may have about planned works and potential impacts on property management operations during construction. Land Access Officers are:

Gerard Nolen: 0490 424 319

Patrick Nolen: 0492 900 639

Murray Mangelsdorf: 0490 425 096

John Trahair: 0490 425 092

Graham Meers: 0428 620 943

Project Community and Stakeholder Engagement

Team: 1800 49 06 66 (free call)

Keep Updated on EnergyConnect

Elecnor Australia is committed to working with landowners and communities through the construction of EnergyConnect. There are several ways to contact the project team. Contact the Project Community and Stakeholder Engagement Team on:

1800 49 06 66 (free call) or pec.community@elecnor.es
secureenergyjv.com.au/projects/energyconnect

Write to us at: Elecnor Australia 1/22 Edward Street, Wagga Wagga NSW 2650

Subscribe to our project e-newsletter at www.transgrid.com.au/energyconnect

To provide any feedback on the way we engage please tell us at www.secureenergyjv.com.au/tell-us-what-you-think/

