

Construction Notification - Transmission line stringing across roads

July 2025

Elecnor Australia has been contracted by Transgrid to deliver part of EnergyConnect with the construction of 700km of new power lines from the SA border to the regional energy hub of Wagga Wagga. The project will connect the electrical grids of New South Wales, South Australia, and Victoria, improving reliability of our nation's energy supply.

Construction activities

The EnergyConnect project team are continuing to advance construction activities on the transmission line from Dinawan, near Bundure to Wagga Wagga. **From early July 2025 to late July 2025, weather permitting**, the project team will be stringing transmission lines across a number of roads in the Lockhart Shire local government area, at the following locations:

- **Dunlevys Lane** approximately 12km east of Lockhart
- **County Boundary Road** approximately 16km east of Lockhart
- **Pat Gollashes Lane** approximately 19km east of Lockhart
- **French Park Bullenbung Road** approximately 22 km east of Lockhart
- **Hendersons Road** approximately 32km east of Lockhart
- **Bullenbung-The Rock Road** approximately 31km east of Lockhart
- **Boyds Road** approximately 10km north-west of The Rock
- **The Rock-Collingullie Road** approximately 11km north of The Rock

Work outside of approved construction hours

The approved hours of works are:

- 7am to 6pm Monday to Friday
- 8am to 1pm Saturdays
- At no time on Sundays and NSW Public Holidays.

Works outside these standard construction hours are planned until December 2025 across the alignment to ensure these activities are carried out safely and to minimise disruption to the community.

How could this affect you?

There will be an increased number of construction vehicles, plant and machinery operating in the area of the works and travelling to and from these sites.

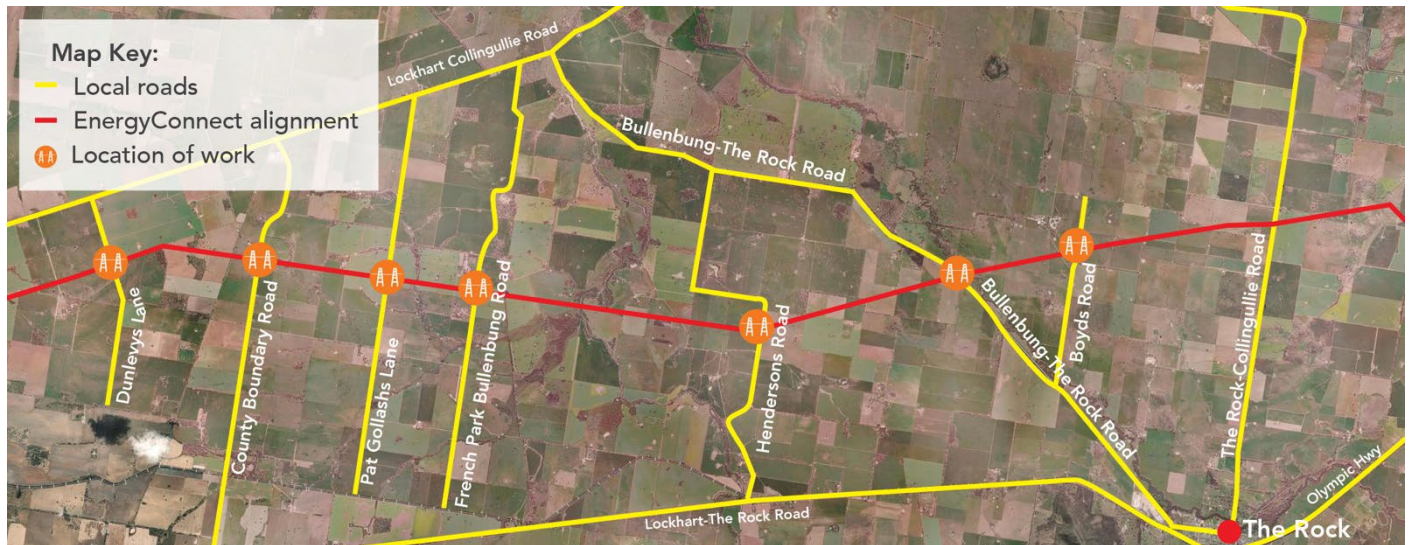
Temporary traffic changes will be in place to ensure the work zone is safe. Road users should factor this in when planning their journeys and allow for delays.

Types of equipment

The type of plant and equipment you can expect to see as part of the stringing works include steel cables, draw wire, conductor wire, insulators, elevated work platforms, rough terrain cranes, telehandlers, trucks and light vehicles.

All work will be carried out in line with the project's Conditions of Approval and Construction Environmental Plan.

Map showing the locations of the work



How we're managing impacts

Traffic management

Please keep to the sign posted speed limits and drive to the conditions. Where traffic control is in place, follow the direction of traffic controllers.

Site light, noise and vibration

Machinery and equipment will generate some light, noise and vibration. We will make every effort to minimise impacts by:

- Minimising the number of machines/vehicles to be used
- Ensuring all machinery and vehicles are maintained and serviced
- Turning off machinery and vehicles when not in use
- Fitting equipment with devices to minimise noise
- Monitoring dust, noise and vibration to manage any potential impacts and change our work if required.

Contact Us

Please contact us if you have any questions about the stringing works or if you have any questions about the project. We can be contacted via **Project Community and Stakeholder Engagement Team**: 1800 49 06 66 (free call) or email pec.community@elecnor.es

Keep Updated on EnergyConnect

Elecnor Australia is committed to working with landowners and communities through the construction of EnergyConnect. There are several ways to contact the project team. Contact the Project Community and Stakeholder Engagement Team on:

1800 49 06 66 (free call) or pec.community@elecnor.es
secureenergyjv.com.au/projects/energyconnect

Write to us at: Elecnor Australia 1/22 Edward Street, Wagga Wagga NSW 2650

To provide any feedback on the way we engage please tell us at www.secureenergyjv.com.au/tell-us-what-you-think/

