

# EnergyConnect

## Out of Hours Construction Notification

December 2025

**Elec**nor Australia has been contracted by Transgrid to deliver part of EnergyConnect with the construction of 700km of new power lines from the SA border to the regional energy hub of Wagga Wagga.

The project will connect the electrical grids of New South Wales, South Australia, and Victoria, improving reliability of our nation's energy supply.

### Construction activities

The EnergyConnect project team are continuing to advance construction activities on the transmission line from Wagga Wagga, to Dinawan, near Bundure. Post-construction inspection and rectification works will be undertaken on the Overhead Transmission Line between Wagga Wagga and Dinawan, known as Line 5, between **Tuesday 6 January and Tuesday 31 March 2026**.

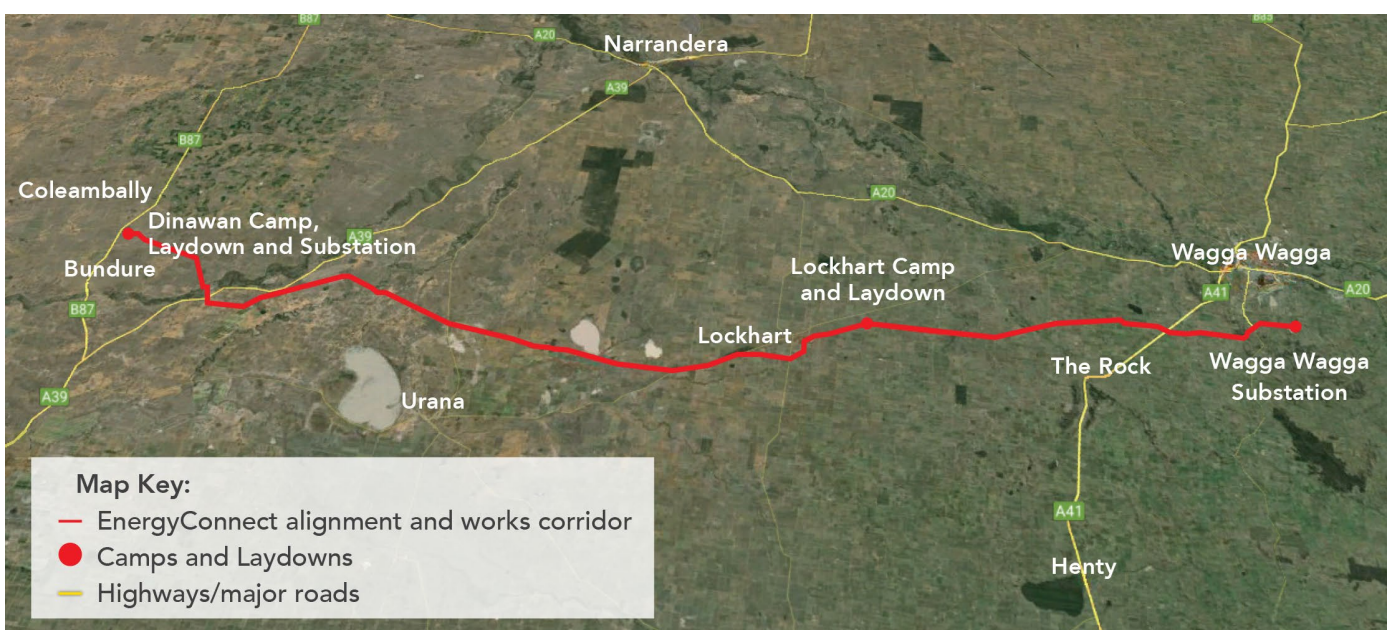
#### Work outside of approved construction hours

The approved hours of works are:

- 7am to 6pm Monday to Friday
- 8am to 1pm Saturdays
- **Works outside these standard construction hours are scheduled across the alignment** to ensure these activities are carried out safely and to minimise disruption to the community. Works will take place, weather permitting, **Monday to Sunday 7am to 7pm including Public Holidays**.
- In addition, some works are permitted to occur **between 7 pm and 7am (including Public Holidays), until 31 March 2026**, excluding sensitive receivers.

### Map showing the location of the work

Works outside of approved construction hours are permitted to occur along the transmission line alignment between Dinawan and Wagga Wagga as shown on the map below.



## Overhead Transmission Line rectification works

Rectification work includes carrying out repairs, maintenance and minor adjustments to ensure the safe and reliable operation of the line. These activities may include the following:

- vegetation clearing
- restoring disturbed areas
- minor earthworks
- checking and repairing foundations
- other essential upkeep tasks needed to maintain the transmission line.

### Types of plant and equipment being used

The type of plant and equipment you can expect to see as part of these works include Elevated Work Platforms, graders, chainsaws, chippers, excavators, hand drills, hand tools, impact wrenches, line marking plants, low loaders, tipper trucks, semi-trailers, trucks and light vehicles.

### How could this impact you?

During these works you may notice some temporary increases in lighting, noise and vibration from machinery and equipment. There will also be additional construction vehicles in the area. All activities do not currently require traffic control measures. We will make every effort to minimise impacts and all works will be carried out in line with the project's Conditions of Approval and Construction Environmental Plan.

### How we're managing impacts

We will make every effort to minimise impacts by:

- minimising the number of machines and vehicles used
- ensuring all machinery and vehicles are maintained and serviced
- turning off machinery in vehicles when not in use
- directing any temporary lighting down and away from homes
- fitting equipment with devices to minimise noise
- monitoring noise so we can manage any potential impacts and adjust our workers required.

## Contact Us

Please contact us if you have any questions about the Out of Hours construction works or if you have any questions about the project.

We can be contacted via our **Community and Stakeholder Engagement Team** on 1800 49 06 66 (free call) or email [pec.community@elecnor.es](mailto:pec.community@elecnor.es)

Please contact a Land Access Officer in relation to property access matters and any concerns you may have about planned works and potential impacts on property management operations during construction.

Land Access Officers are:

**Gerard Nolen:** 0490 424 319

**Patrick Nolen:** 0493 802 791

**Murray Mangelsdorf:** 0490 425 096

**John Trahair:** 0490 425 092

**Graham Meers:** 0428 620 943

## Keep Updated on EnergyConnect

Elecnor Australia is committed to working with landowners and communities through the construction of EnergyConnect.

There are several ways to contact the project team. Contact the Project Community and Stakeholder Engagement Team on:

1800 49 06 66 (free call) or [pec.community@elecnor.es](mailto:pec.community@elecnor.es)

[secureenergyjv.com.au/projects/energyconnect](https://secureenergyjv.com.au/projects/energyconnect)

Write to us at: Elecnor Australia, Lockhart Camp, corner of Lockhart Road and County Boundary Road, Lockhart, NSW 2656.

To provide any feedback on the way we engage please tell us at [www.secureenergyjv.com.au/tell-us-what-you-think/](https://www.secureenergyjv.com.au/tell-us-what-you-think/)

