

**Elecnor Australia has been contracted by Transgrid to deliver part of EnergyConnect with the construction of 700km of new power lines from the SA border to the regional energy hub of Wagga Wagga.**

**The project will connect the electrical grids of New South Wales, South Australia, and Victoria, improving reliability of our nation's energy supply.**

The EnergyConnect project team is undertaking final activities on the transmission line from Dinawan, near Bundure, to Wagga Wagga before it becomes operational and is integrated into the National Electricity Market (NEM) by late 2026.

As part of this work, Elecnor is carrying out vegetation management activities from **late January 2026 to mid-February 2026**, which will include pruning or removal of trees identified as posing a risk or hazard to the operation of the live transmission line and ensuring safe separation distances within the easement.

### Vegetation management

Traditional vegetation management methods for transmission lines involves clearing of the full easement. For EnergyConnect, a reduced method of clearing was adopted, and the full easement was not cleared. As part of this process, every tree on the easement was assessed by an arborist to determine if it would infringe on the transmission line conductors. The arborist's assessment was conducted at the start of the project and was repeated after the transmission line conductors were installed. The vegetation management program is in line with approved environmental guidelines and may include removal or pruning of vegetation to reduce impacts. An ecologist will be present to inspect the vegetation and supervise management activities to minimise any potential harm to fauna.

### How will this affect you?

The scope of vegetation management works includes activities on public and private landholdings. Community members may encounter isolated tree trimming or removal activities in or adjacent to road reserves in the following Local Government Areas near the transmission line:

- Lockhart Shire, The Rock-Collingullie Road
- Lockhart Shire, The Rock-Bullenbong Road
- Lockhart Shire, Urana-Lockhart Road in the Brookong State Forest
- Lockhart Shire, Tenison Lane
- Lockhart Shire, Strongs Lane
- Federation, Coonong Road
- Wagga Wagga City, Plumpton Road

### Traffic and safety

The community is likely to notice some changes in traffic movements on the roads close to where the clearing program is taking place. Traffic control, where required, will be in place for your safety. Please follow the instructions of traffic controllers and traffic boards and always drive to the conditions. We ask for your patience and understanding as this work is undertaken.

### Types of equipment

You can expect to see a range of working at heights equipment such as Elevated Work Platforms, chippers and excavators. There will also be a bush fire truck, water cart and rigging gear to assist with tree clearing for working at heights, chainsaws, pruning saws, loppers, and other tree clearing equipment. There will also be additional light vehicles.

## Work outside of approved construction hours

The approved hours of works are:

- 7am to 6pm Monday to Friday
- 8am to 1pm Saturdays
- Works outside these standard construction hours are scheduled across the alignment until March 2026. This is to ensure these activities are carried out safely and to minimise disruption to the community. Works will take place, weather permitting, Monday to Sunday 7am to 7pm including Public Holidays.
- In addition, some rectification works are permitted to occur between 7 pm and 7am (including Public Holidays).

## How we are managing impacts

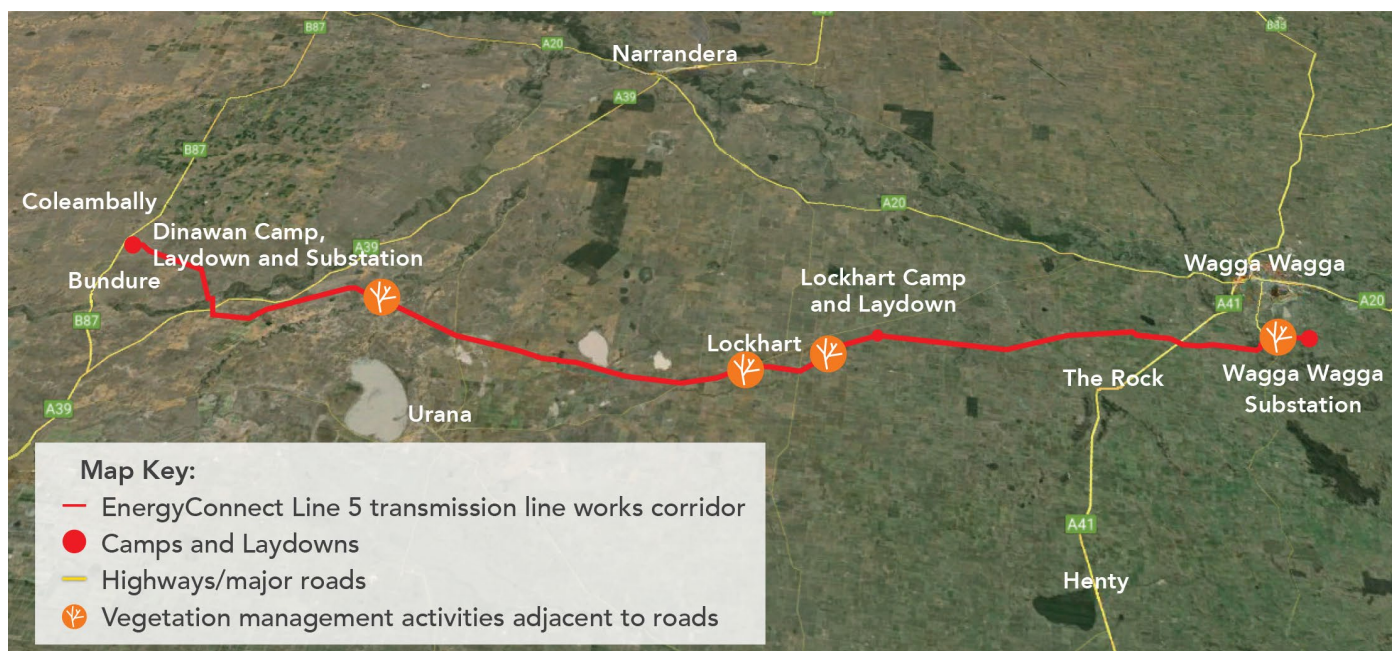
We are actively managing potential impacts like noise, dust and biosecurity. Our focus remains on being a considerate neighbour by continuing to:

- ensure all machinery and vehicles come clean and are well maintained
- turn off machinery in vehicles when not in use
- direct any temporary lighting down and away from homes
- fit equipment with devices to minimise noise
- monitor noise so we can manage any potential impacts and adjust our workers required
- water trucks for dust where required

## Contact Us

If you have any queries or concerns, please contact our Project Community and Stakeholder Engagement Team on 1800 49 06 66 (free call), email: [pec.community@elecnor.es](mailto:pec.community@elecnor.es), or your dedicated project Land Access Officer.

## Map showing location of vegetation management activities



## Keep Updated on EnergyConnect

Elecnor Australia is committed to working with landowners and communities through the construction of EnergyConnect. There are several ways to contact the project team. Contact the Project Community and Stakeholder Engagement Team on:

1800 49 06 66 (free call) or [pec.community@elecnor.es](mailto:pec.community@elecnor.es)

[secureenergyjv.com.au/projects/energyconnect](https://secureenergyjv.com.au/projects/energyconnect)

Write to us at: Elecnor Australia, Lockhart Camp, corner of Lockhart Road and County Boundary Road, Lockhart, NSW 2656.

To provide any feedback on the way we engage please tell us at [www.secureenergyjv.com.au/tell-us-what-you-think/](https://www.secureenergyjv.com.au/tell-us-what-you-think/)

